



CITY OF  
LUND

# Waste Sorting Guide

## for waste, packaging and newspapers



## Where should I dispose of my waste?

### Recycling centers

At staffed recycling centers, you can dispose of items such as old furniture, flea market items, textiles, large cardboard boxes, garden waste, hazardous waste, and electronic waste.

### Recycling centers in Lund municipality

- Gastelyckan Recycling Center  
Kalkstensvägen 22, Lund
- Gunnesbo Recycling Center  
Traktorvägen 18, Lund
- Veberöd Recycling Center  
Truckvägen 5, Veberö
- Genarp Recycling Center  
Omvägen 2, Genarp

### Recycling stations

Recycling stations are available at around ten locations in Lund. Here, you can dispose of packaging and newspapers if you don't have collection services at your home. Items that are not packaging or newspapers should be taken to a recycling center.

### Small electronics and batteries ("Samlaren")

Small electronic items, batteries, and various light bulbs (LED, low-energy, halogen) can be dropped off in special collection bins called "Samlaren" located in select grocery stores across Lund.

### Kerb-side collection

By 2027, all residents will have access to collection of food waste, packaging and newspapers near their homes.

- **Households:** Waste will be sorted into two bins, each with four compartments.
- **Apartments:** Recycling facilities will be available close to residential buildings.





### Damaged textile



#### For instance:

- Torn clothes
- Torn textiles



### Bulky waste



#### For instance:

- Small furniture
- Broken mirrors



### Reuse



#### For instance:

- Books
- Kitchenware
- Whole chinaware



### Garden waste



#### For instance:

- Leaves
- Hedge trimmings
- Small branches

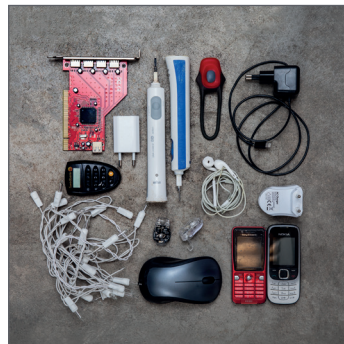


### Light bulbs



#### For instance:

- Led lamps
- Light bulbs
- Low energy lamps



### Small electronics



#### For instance:

- Mobile phone
- Charging cords
- Headphones
- Electronic toothbrush



### Batteries



#### For instance:

- Rod batteries
- Square batteries
- Button cell batteries



### Hazardous waste

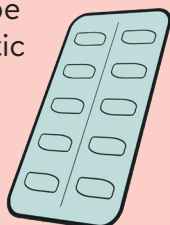


#### For instance:

- Spray cans
- Nail polish
- Solvents
- Paint and varnish residues

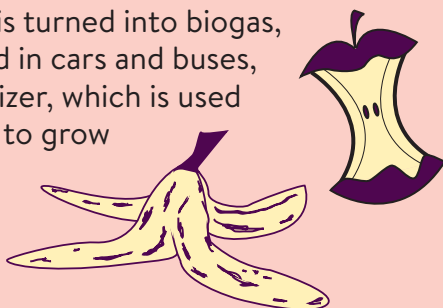
## Good to Know

You should return leftover or expired medication to the pharmacy. Empty blister packs should be sorted as plastic packaging.



The packaging does not need to be clean to be recycled, but it must be empty. It is not necessary to rinse the packaging. However, it might be nicer for you and those handling the packaging. If you choose to rinse, use cold water or reuse dishwater.

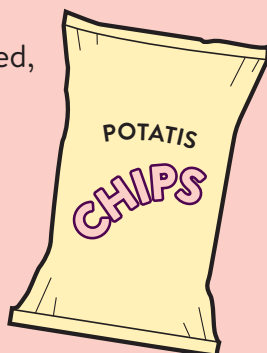
Food waste is turned into biogas, which is used in cars and buses, and biofertilizer, which is used on farmland to grow new food.



Shoe covers, plastic gloves, and face masks are residual waste.



Not sure if a chip bag is plastic or metal? Squeeze it – if it unfolds, it's plastic; if it stays compressed, it's metal.



Drinking glasses are not glass packaging and are not of the same glass quality, so they should not be recycled. Wrap broken drinking glasses properly and place them in the residual waste bag.



Illustrations ©Lunds kommun

Contact information:  
**Lund Waste Management**  
(Lunds Renhållningsverk)

**Phone:** 046-359 53 90  
**Email:** renhallningsverket@lund.se  
**Address:** Traktorvägen 16, Lund  
**Website:** [www.lund.se/avfall](http://www.lund.se/avfall)